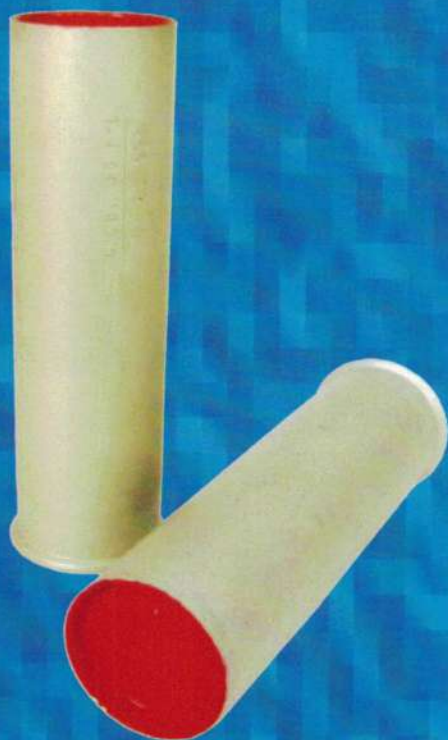


TEAR GAS SHELL CC38-FL (IRRITANT CS)

The tear gas shells 38mm caliber is used by the police and is designed to prevent and neutralize the aggressive actions of groups who seriously disrupting public order according to the law.



DATA :

Shell diameter, mm	Ø38-0,3
Height of shell, mm	138,5±1
Weight of shell, kg	0,218 ± 0,007
Weight of pyrotechnic charge, kg	0,0026
Weight of tear smoke charge, kg	0.084 ± 0.003
Irritant gas	CS(ortho-chloro-benzal malonitril) CIC6H4CH=C(CN)2

PERFORMANCE :

Smoking time, sec	min. 20
Delay time, sec	4
Range (short/long), m	85 ÷ 140
Operational temperature range, °C	-30° ÷ +50°

PACKING :

18 pcs. shell in mettalic box and 5 pcs. metallic box are packed in a wooden case.

Size of box, mm	825x360x280
Weight, kg	41
Class of explosion hazard	1.4G, UN 0301